

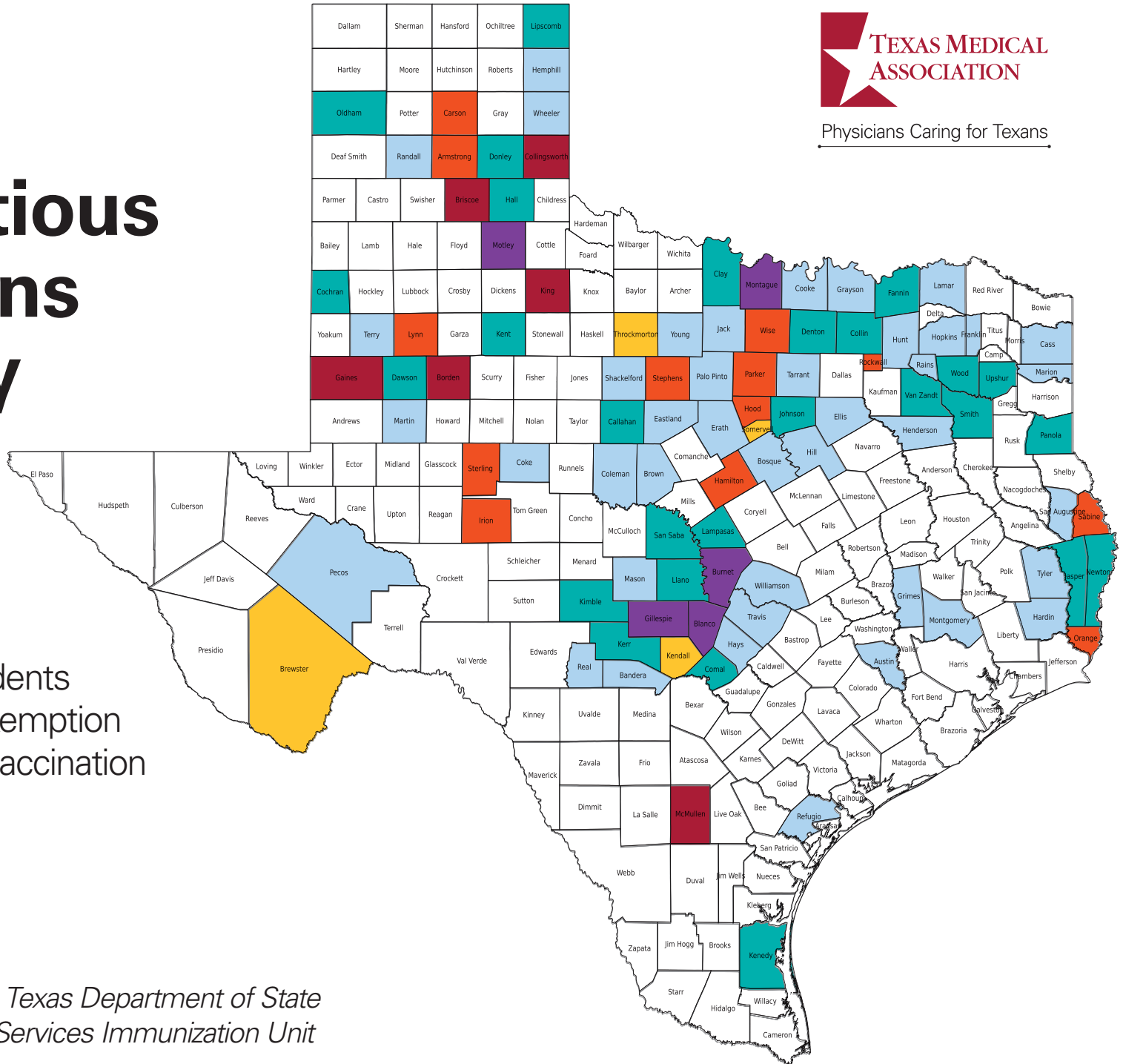
Reported Conscientious Exemptions by County

2024-25 School Year

Percentage of K-12 students with a conscientious exemption on file for at least one vaccination

- 8-8.99%
- 7-7.99%
- 6-6.99%
- 5-5.99%
- 4-4.99%
- 3-3.99%
- < 2.99%

Source: Texas Department of State Health Services Immunization Unit



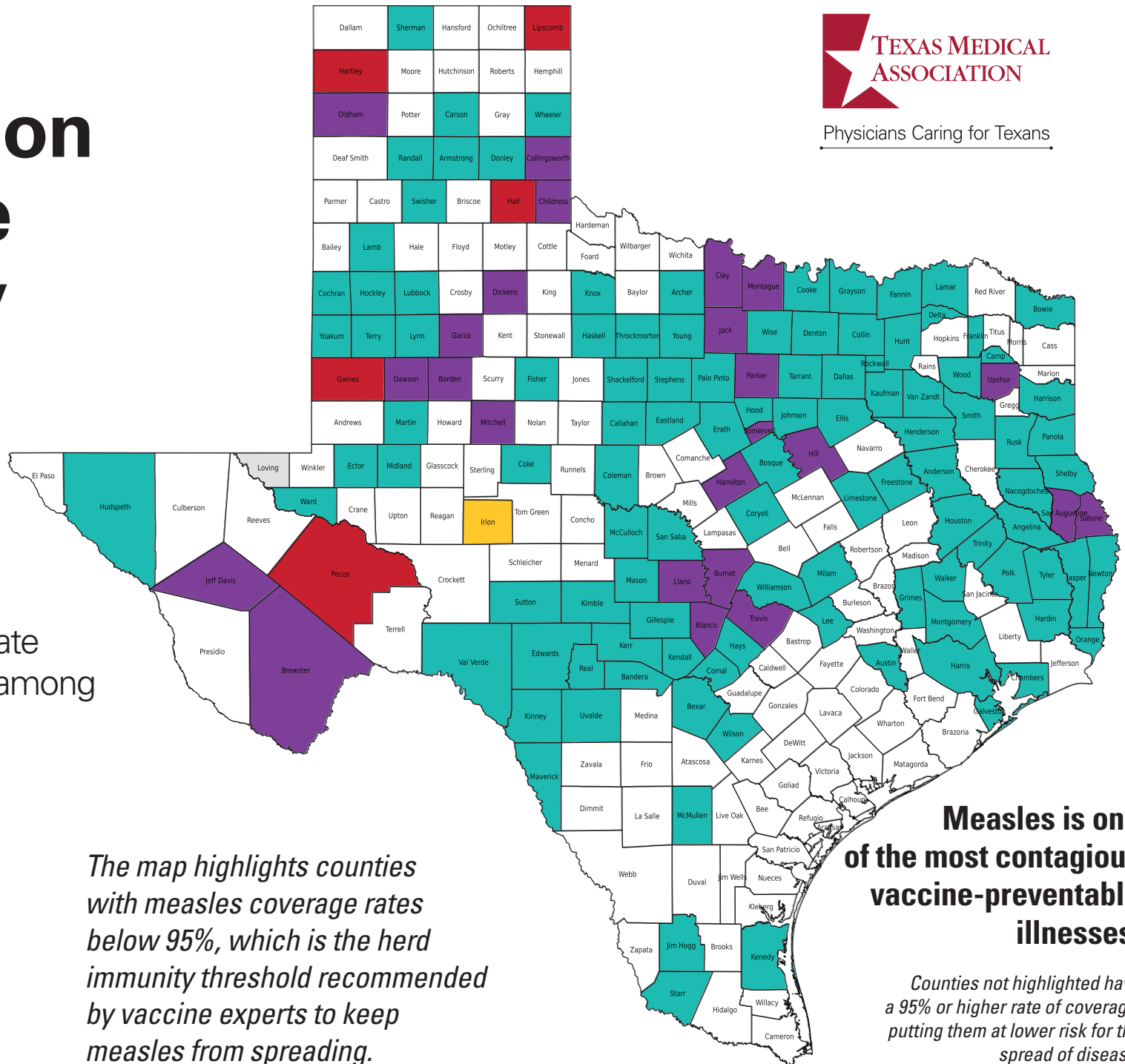
School Vaccination Coverage Levels by County

2024-25 School Year

Percentage of up-to-date measles vaccinations among kindergartners

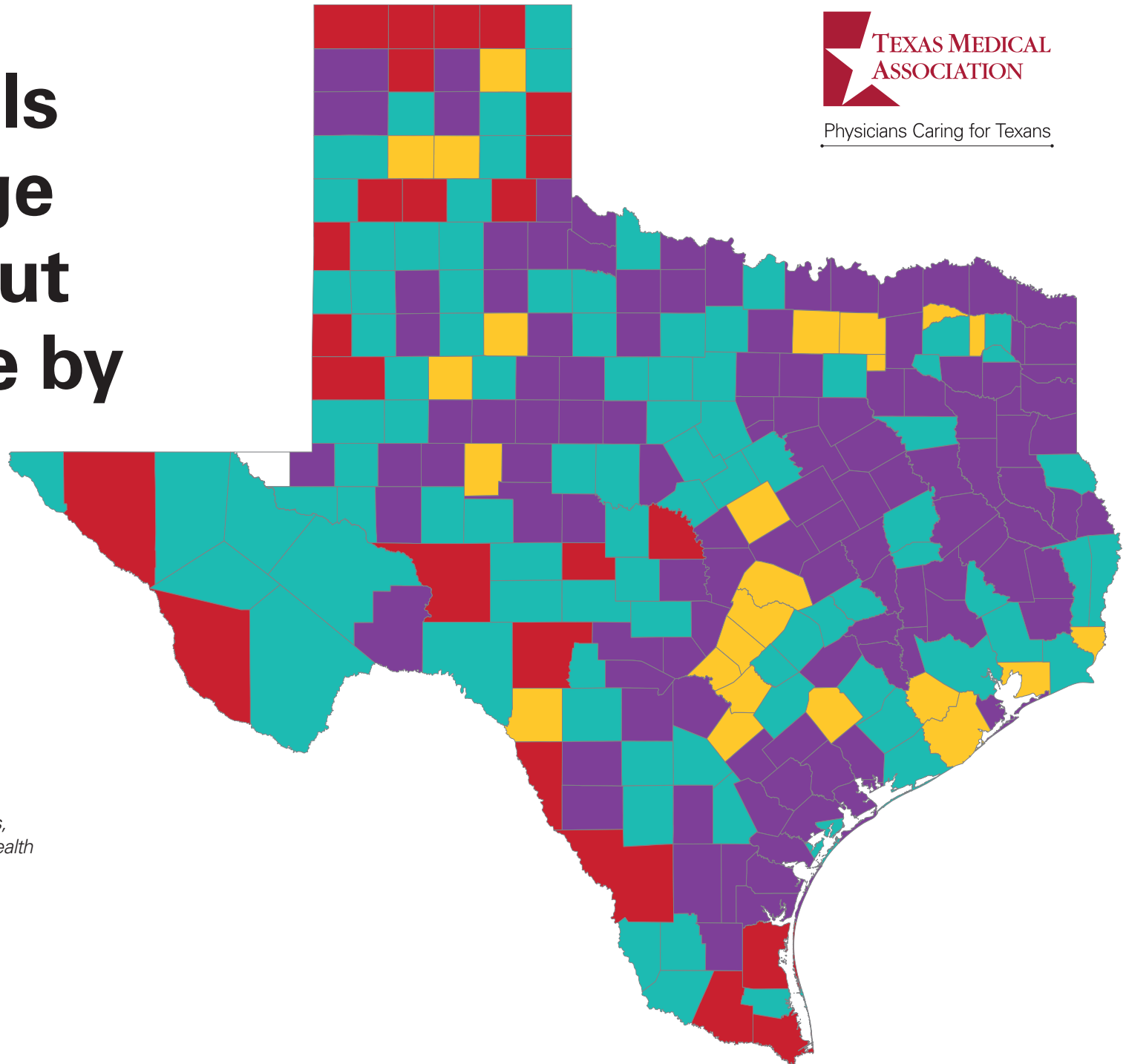
- 90-95%
- 80-89.99%
- 70-79.99%
- 65-69.99%
- < 65%
- No Data

Source: Texas Department of State Health Services



Individuals Under Age 65 Without Insurance by County

- > 25%
- 20-24.99%
- 15-19.99%
- 10-14.99%
- < 10%



Source: 2025 County Health Rankings,
University of Wisconsin Population Health
Institute